

- ▶ **Maximum load volume - without wheel arches**
- ▶ **High quality and stable**
- ▶ **Aluminum floor - as standard**



MAN TGE with Kiesling reefer box body



Based on chassis:

MAN TGE 3.5 t GW / MAN TGE 5 t GW
wheel base 3640 mm

Body interior dimensions

length ca.: 3300 mm
width ca.: 1860 mm
height ca.: 1900 mm



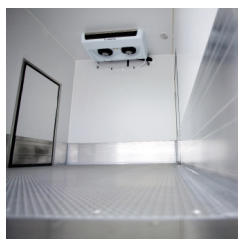
Load volume 200 E2-boxes or 5 EPAL

Side door 1x as standard, 900 mm wide

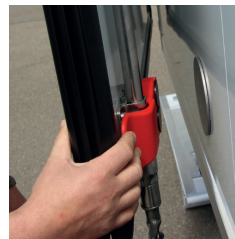
Added value - as standard:



Stainless steel lockings,
ergonomic handle,
one-handed operation



Liquid-tight floor tray
made of aluminium
barley grain



Magnetic door retainer
Easy Lock®



For HACCP-tested -
hygienically safe
transport

Refrigerated bodies with high-quality equipment

Options:



Rear view camera system



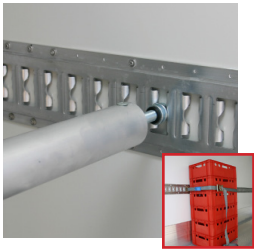
Temperature recording system



ATP-FRC - certification



PVC cold curtain



Load securing with anchor rail and barrier rod or lashing strap



Load securing with clamping bar



Cool Slide® - partition wall for transportation in several temperature zones



Cool Flap® - partition wall, light and easy to fold



Aero Paket
by **Kiesling**

- ▶ Reduces fuel consumption and driving noise
- ▶ Top advertising space
- ▶ Protects the cooling unit



Emergency release, door can be opened from the inside.



foldable two-stage ascent

Kiesling Fahrzeugbau GmbH * Lauteracher Weg 10 * D-89160 Dornstadt-Tomerdingen
Telefon: +49.7348.2002-0 * E-Mail: info@kiesling.de * www.kiesling.de
Certified acc. to **DIN EN ISO 9001:2008** (Quality Management) sowie **ISO 14001** (Environmental Management)

Kiesling
Kühlfahrzeuge