

# Installation Instructions for Cool Slide as an Accessory

**Function:**

Link to Video: <https://www.youtube.com/watch?v=TD1FO286-6U>



**Geschlossene Position**  
Closed position



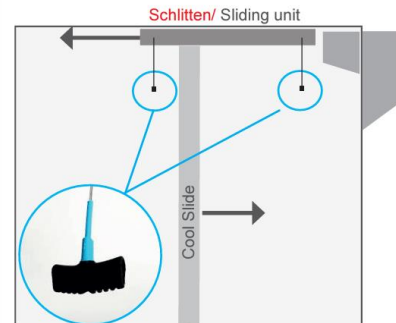
Richtige Reihenfolge einhalten.  
Keep correct order.

**Cool Slide verschieben**  
Move Cool Slide



Ziehen Sie an den **roten Griffen**.  
Pull **red handles** to move.

**Schlitten verschieben**  
Move sliding unit



Ziehen Sie an den **blauen Griffen**.  
Pull **blue handles** to move.

## Cotents:

Pos.	Description:	Item Number:	Quantity:	Image:
1	Aluminum Rail	550B.KI.1212	2 pcs	
2	Carriage 1	550B.KI.1272	1 pc	
3	Carriage 2	550B.KI.1271	1 pc	
4	Sliding Bracket	550B.KI.1273	1 pc	
5	Stopper	550B.KI.0941	4 pcs	
6	Cool Slide Walls	550B.KI.1010	3 pcs	
7	Mounting Material (adhesive rivets)	N/A	N/A	

### 1) Mounting Aluminum Rails (Pos. 1) on the Roof

- Determine the center of the structure and mark a track width of 1300 mm centrally on the roof.
- Mount the aluminum rail (Pos. 1) 10 mm from the rear doors, ending 200 mm before the evaporator.
- Clean the roof and the aluminum rails with acetone.



- Apply 2x adhesive (Körapur 140) in the grooves of the aluminum rails over the entire length.
- Press the aluminum rails (Pos. 1) into the correct position and rivet them.



Apply 2 beads of adhesive (Körapur 140) in the grooves of the aluminum rail.

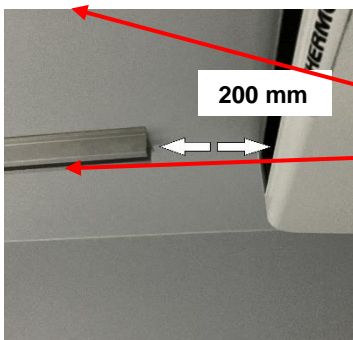


**Note:**

The adhesive bead must protrude from the grooves.

Ensure that the two aluminum rails are mounted exactly parallel for the proper functioning of the carriages.

### 2) Mount 2x stoppers (Pos. 5) in the aluminum rails near the evaporator.



2x stoppers (Pos. 5)



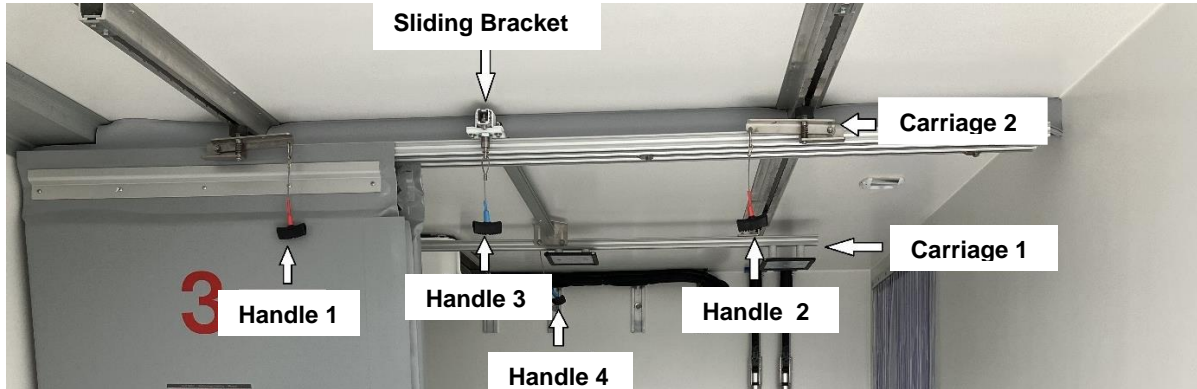
**Note:**

Maintain a minimum distance of 800 mm between Cool Slide (Pos. 6) in the lowered position and the evaporator.

### 3) Insert Carriage 1 (Pos. 2) from the rear into the aluminum rails.



4) Insert Carriage 2 (Pos. 3) from the rear into the aluminum rails.



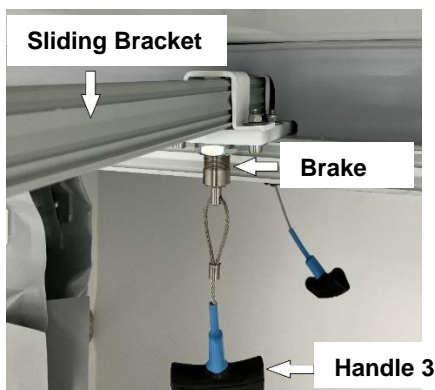
**Note:**

Release the brakes when inserting!

To do this, pull both red handles for Carriage 2 (Handles 1 & 2) and the blue handle (Handle 3) for the sliding bracket.

5) Installation of Sliding Bracket (Pos. 4)

- Insert the sliding bracket (Pos. 4) through the middle opening on Carriage 2 (Pos. 3)
- Pull locking handle 3 to release the brake when inserting.



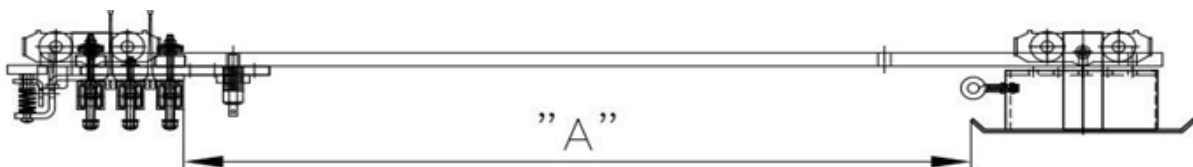
6) Connect Carriage 1 (Pos. 2) and Carriage 2 (Pos. 3) with the Sliding Bracket (Pos. 4).

- The sliding bracket must be adjusted to the "A" dimension.
- Attach the sliding bracket to Carriage 1 with the pre-set screws.



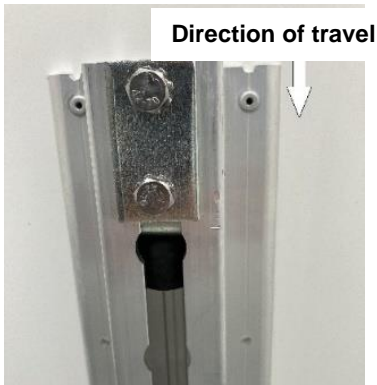
**Achtung:**

Adjust the "A" dimension between Carriage 1 and Carriage 2 according to the corresponding box height. The "A" dimension can be found in the table and drawing. Secure the sliding bracket to Carriage 1 with the pre-set screws.



Box Height:	"A" Dimension:
2600 mm	1493 mm
2500 mm	1393 mm
2400 mm	1293 mm
2300 mm	1193 mm
2200 mm	1093 mm
2100 mm	993 mm
2000 mm	893 mm
1900 mm	793 mm
1800 mm	693 mm

### 7) Mount stoppers (Pos. 5) at the rear doors in the aluminum rails.



**Note:**

The rubber sides of the stoppers at the rear and near the front wall must face each other.

### Mount Cool Slide Walls (Pos. 6

Positions:

- Mount the first insulating curtain on the left in the first rail
- Mount the second insulating curtain in the middle in the second rail
- Mount the third insulating curtain on the right in the third rail



**Note:**

A gap of about 14 mm must be set between the aluminum profile and the carriage for all three insulations

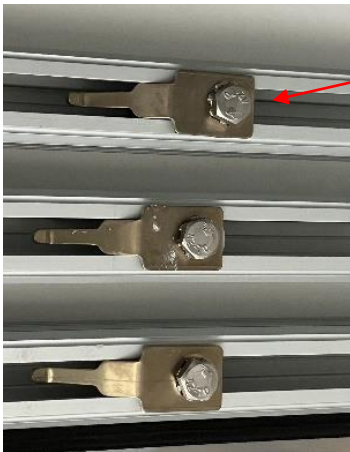
- Attach the Cool Slide walls (Pos. 6) with the aluminum profile to the pre-set screws of the roller carts in the carriages.



Slide the upper lip of Cool Slide walls 2 & 3 between the guide rails.

**8) Adjust the stopper (Pos. 5) in the guide rails.**

- The Cool Slide walls (Pos. 6) can be held in position by the stoppers.
- Two stoppers are pre-installed per rail.
- The stoppers can be adjusted at any time or as needed.
- The Cool Slide walls (Pos. 6) are correctly adjusted when the middle sealing lip of elements 1 and 3 rests against the outer wall.
- The middle element 2 must be centered so that the magnets align.



1. Loosen the screw.
2. Move to the desired position.
3. Tighten the screw again.